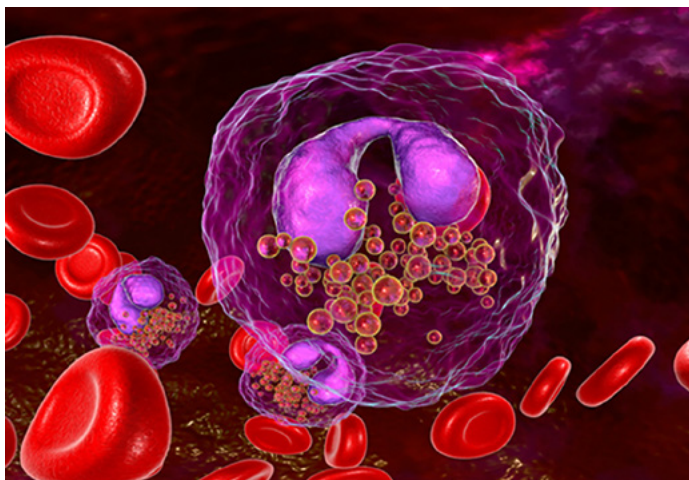




Cleveland Clinic

Respiratory Exchange



[Eosinophilia as a Potential Biomarker to Guide Inhaled Corticosteroid Therapy](#)

[How immune profiles impact COVID-19 outcomes](#)



[How Cleveland Clinic Used Regional ICUs to Alleviate COVID-19 Surges](#)

[Benefits of a unique infrastructure model](#)



[Lung Cancer Screening: It's More Than a CT Scan \(Podcast\)](#)

[Commentary from the Director of the Lung Cancer Program](#)



[Lung Transplant A-Z: From Referral to the Impact of COVID-19 \(Podcast\)](#)

[A discussion with the Director of the Lung Transplant Program](#)

REFERRALS

855.REFER.123
(855.733.3712)

Same-day appointments available.



[Consult QD](#)



[Respiratory Exchange](#)



[Podcasts](#)

**SUBSCRIBE TO
RESPIRATORY EXCHANGE**