



# Education Institute

TEAMWORK | QUALITY | INTEGRITY | INNOVATION | SERVICE | COMPASSION

**MISSION, VISION AND VALUES** In the context of Cleveland Clinic’s mission of “better care for the sick, investigation of their problems and education of those who serve,” the Education Institute serves the needs of the many educational audiences of the Cleveland Clinic community. We seek excellence in advancing education through the values of teamwork, quality, integrity, compassion, innovation and service.



Dear Colleagues, Friends and Supporters:



From Cleveland Clinic’s earliest days, education has been an integral element of our vision, emblazoned on the walls of the original Cleveland Clinic building: “Care of the sick, investigation of their problems, and further education of those who serve.”

Embodying that vision, the Education Institute has been a vital component of Cleveland Clinic since its founding in 1921, when new residents (then called fellows) came here to advance their medical and surgical training. In 1935, Cleveland Clinic established the Frank Bunts Education Institute, honoring one of Cleveland Clinic’s four founding physicians and firmly establishing Cleveland Clinic as a leader in medical and continuing education.

Today, our vision remains unchanged — teaching those who serve — but our scope has widened greatly to encompass the entire Cleveland Clinic community of more than 50,000 staff and employees. The Education Institute, which comprises 10 centers on main campus and the Cleveland Clinic Florida Center for Education, collectively addresses many audiences including medical students, residents and fellows; professional colleagues within and outside Cleveland Clinic; our own staff and healthcare professionals; and our patients and their families.

Kindest regards,

James K. Stoller, MD, MS  
Chairman, Education Institute  
Jean Wall Bennett Professor of Medicine  
Samson Global Leadership Endowed Chair





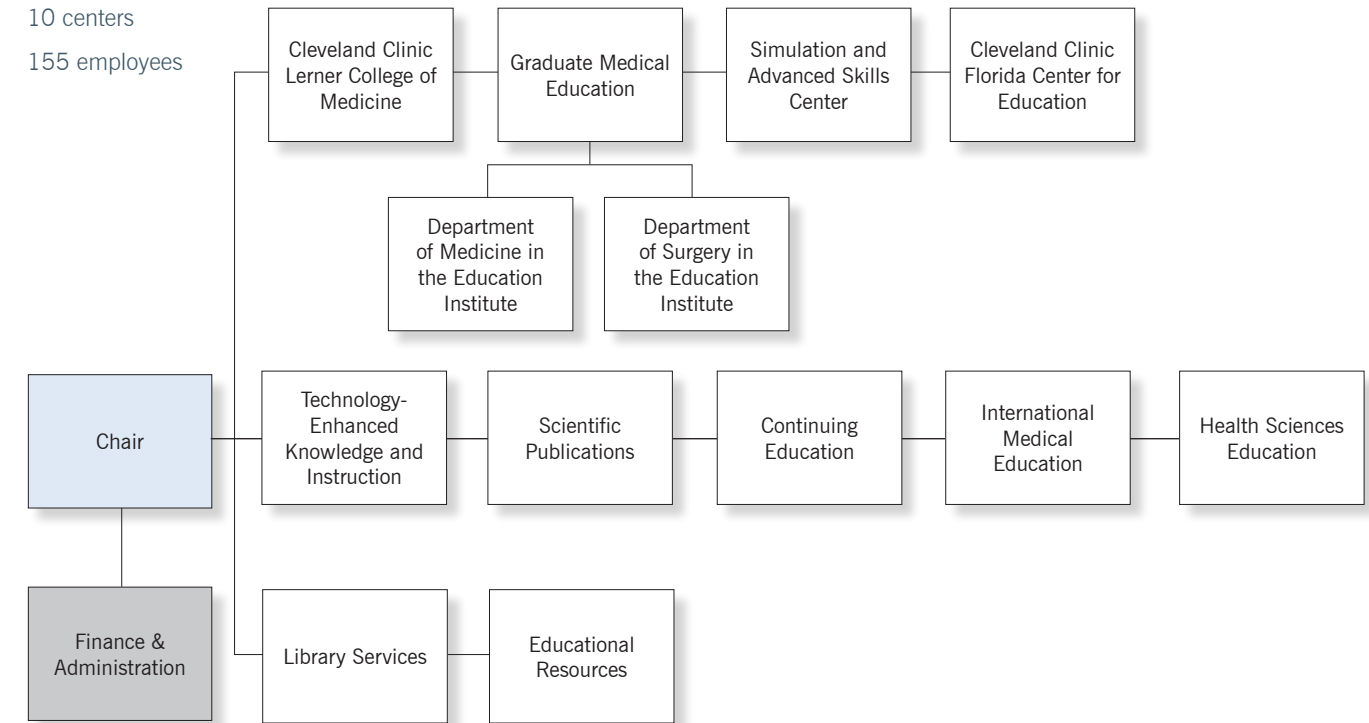
Centers in the Education Institute

## Education Institute — Table of Organization

### Main Campus

10 centers

155 employees





## Lerner College of Medicine

The Cleveland Clinic Lerner College of Medicine was founded in 2002 in collaboration with Case Western Reserve University School of Medicine. What's special about the Lerner College? To begin with, the program is dedicated to training physician investigators and requires five (rather than four) years to accommodate the research portion and master's level research thesis requirement of the curriculum.

The college also boasts:

- Small class size — 32 students in each class
- Full-tuition scholarships for all students
- Problem-based learning curriculum
- Interactive seminars – no lectures
- Integrated medical humanities curriculum
- Assessment for learning – portfolio-based assessment
- Competency based – no grades, exams or class ranking
- Research and clinical experience integrated throughout all 5 years

Educators developed an interactive learning environment, integrating a curriculum centered around problem-based learning and an innovative portfolio-based system for measuring progress. Through this experience, students become critical thinkers, collaborative professionals and experts in clinical practice.

Our graduates are highly competitive for prestigious academic residencies, matching at institutions such as Johns Hopkins, Duke, Yale, Massachusetts General, Brigham and Women's, and Cleveland Clinic. We are confident they will go forward to influence the future of medical care and biomedical research.

In collaboration with Case Western Reserve University, a state-of-the-art medical education campus is under construction for students from Case medical school's two tracks — the Lerner College of Medicine and the university program — and its schools of dental medicine, physician assistant and nursing. The campus will serve as the home for the interactive seminar, laboratory and problem-based learning that typically takes place during the first two years of medical school.



## Medical Student Electives

The Lerner College of Medicine invites medical students from other schools to fulfill their electives at Cleveland Clinic. With elective options in more than 65 areas, a varied patient population and a commitment to world-class care, Cleveland Clinic offers every medical student a unique learning experience.



## Graduate Medical Education

Once students earn their medical degree, they enter an internship or residency where they train under supervision. Following a residency, some may choose to complete a fellowship in a medical subspecialty.

In 2016, Cleveland Clinic is training more than 1,500 residents and fellows throughout all its locations. The advantages of training at Cleveland Clinic are many.

Our trainees:

- **Have choices.** Cleveland Clinic sponsors one of the nation's largest graduate medical education programs, with 108 training programs approved by the Accreditation Council for Graduate Medical Education (ACGME), along with 92 special fellowship programs.
- **Gain a world of experience.** Because Cleveland Clinic is one of the world's largest, busiest healthcare centers, our trainees see rare, complex and unusual cases in addition to many routine medical problems. What's more, our trainees care for patients from various cultural backgrounds.

- **Learn at one of the nation's best hospitals.** Cleveland Clinic is consistently named as one of the nation's top hospitals by *U.S. News & World Report*. Our heart and heart surgery program has been ranked No. 1 by *U.S. News* since 1995, and nine of our clinical specialties, all of which offer GME training, are ranked within the top three by *U.S. News*. What's more, major medical breakthroughs over many decades have happened at Cleveland Clinic.
- **Discover new things.** All our trainees engage in cutting-edge research in basic sciences, clinical medicine and biomedical engineering alongside our scientists and clinical faculty.

Brian Mandell, MD, PhD, serves as Chairman of the Department of Medicine in the Education Institute, and R. Matthew Walsh, MD, serves as Chairman of the Department of Surgery in the Education Institute. Both help oversee graduate medical education activities at Cleveland Clinic.







The center is accredited by the American College of Surgeons and the Society for Simulation in Healthcare.

## Simulation and Advanced Skills Center

Multidisciplinary | Innovative | Quality-Driven

In the realm of simulation training, a new 10,000-square-foot expansion of the main simulation space positions Cleveland Clinic at the cutting edge. Simulated scenarios and high-tech simulation equipment (including human patient simulators that breathe, bleed, respond to drugs, and more) allow healthcare teams to gain hands-on experience in a low-stress and low-risk environment.

Physicians, nurses, residents and fellows, medical students and other health professionals use simulation to build skills around teamwork and communication — essential skills, particularly in critical situations. Simulated scenarios can be videotaped and reviewed later to learn what went right and which decisions can be improved.

The center also offers programs to advance laparoscopic, endoscopic, endovascular and robotic surgery skills. Physicians from around the world come to Cleveland Clinic to learn new techniques, often with a focus on a particular surgical discipline.

A new one-year Interprofessional Fellowship in Simulation and Advanced Skills Training gives a Cleveland Clinic health professional the chance to design and implement a simulation-based medical education research project.

Physicians and healthcare teams benefit from a wide spectrum of additional resources:

- Task-based simulation laboratory for practicing suturing and laparoscopic techniques
- Two-thousand-square-foot wet lab with eight fully functioning operating tables for surgeons to practice minimally invasive surgical techniques
- Short-term preceptorships for physicians outside of Cleveland Clinic who desire one-on-one skill instruction, hands-on training and supervised direct patient care
- Pediatric difficult airway center for practicing airway and ventilator management
- Simulation lab for select cardiothoracic anesthesiology procedures
- Mobile (in situ) simulation that allows teams to train in their everyday work environment
- Standardized patient simulation, which lets our medical students practice physical exam, medical history and communication skills on real people

When used as a complement to traditional medical learning, simulation and advanced skills training help improve patient safety and patient outcomes.



## Scientific Publications

This center oversees the production and publication of *Cleveland Clinic Journal of Medicine* (CCJM). Published since 1931, CCJM is an indexed national peer-reviewed medical journal that delivers timely, practical clinical content, in print, to some 100,000 practicing physicians each month. More than 2 million healthcare professionals and consumers, nearly half of whom are international, annually see the journal in its print and digital formats. Focusing on internal medicine and cardiology, CCJM is one of the best-read journals among physicians in these clinical areas.

CCJM contains clinically targeted review articles and other continuing education-oriented content, making it a valuable educational resource for thousands of physicians each month. Special supplements offer in-depth looks at selected topics, often in specialties beyond internal medicine and cardiology. CCJM content is available free to all at [www.ccm.org](http://www.ccm.org).

This center also offers a medical writing program for Cleveland Clinic professionals who wish to improve their scholarly writing and presentation skills so they can better communicate scientific information via posters, papers, abstracts and more.

**Cleveland Clinic Journal of Medicine** is one of the most widely read journals among office-based internists and cardiologists.





In 2016, Continuing Education offered more than **1,500** CME live courses activities and reached more than **240,000** participants.

## Continuing Education

Thousands of medical professionals depend on the reliable and up-to-date continuing medical education (CME) programs that Cleveland Clinic has provided for more than 80 years. Our continuing education program is certified by the Accreditation Council for Continuing Medical Education, and the center has been awarded the highest accreditation “with commendation.”

A variety of activities, from primary care to medical specialties, are offered either live or online. Each year, the center offers 1,000 live CME courses, many of which are held in countries outside the U.S. Live courses encourage audience interaction, with hands-on workshops, real-time surgical demonstrations and frequent use of an Audience Response System.

The Continuing Education website ([www.ccfme.org](http://www.ccfme.org)) allows convenient access to more than 300 online CME activities, including webcasts, case-based lessons, and online reviews and activities from *Cleveland Clinic Journal of Medicine*. At the heart of the site is Disease Management, a virtual medical textbook authored by 170 Cleveland Clinic physicians.





## International Medical Education

Each year, thousands of physicians, fellows, residents, medical students, administrators and alumni from around the world visit Cleveland Clinic for shadowing experiences, which can last for several weeks. These healthcare professionals come to Cleveland Clinic to discover innovations in medicine and surgery, and to learn how we operate.

Our Center for International Medical Education offers four shadowing opportunities:

- International Physician Observer Program
- Global Clinical Observer Program
- Global Surgical Observer Program
- Preceptorship Program

In 2016, more than 850 observerships were arranged.

The center also offers educational programs by collaborating with a number of healthcare organizations to coordinate mini-symposia — either in Cleveland or at your location — within a particular specialty. These events typically include a tailored mix of lectures on cutting-edge procedures and novel technologies used at Cleveland Clinic, live surgeries, rounds and case presentations.

### Request a Speaker

Do you need a speaker for a medical conference or a presentation for patients? If so, our center can help arrange a Cleveland Clinic physician speaker to meet your needs. Your audiences will gain new knowledge through lectures and case presentations, most of which highlight cutting-edge procedures and novel technologies used at Cleveland Clinic.

## Health Sciences Education

Health science professionals have skills that are essential to patient care. Health science jobs range from high-touch, one-on-one patient care to high-tech, behind-the-scenes laboratory work. From physician assistants and ultrasound technologists to cardiovascular perfusionists and respiratory, physical and occupational therapists, these professionals comprise a large part of Cleveland Clinic's workforce.

To ensure that students are well-prepared to care for patients, Cleveland Clinic sponsors many internal training programs at the certificate, associate degree and post-baccalaureate levels, as well as clinical experiences for health science students enrolled in academic institutions throughout Ohio and across the country.

In addition, this center is involved in health science education community outreach activities designed to expose younger students to career opportunities in the health science professions.

In 2016, the Cleveland Clinic health system provided more than 2,700 clinical rotations for health science students.





## Technology-Enhanced Knowledge and Instruction

The Center for Technology-Enhanced Knowledge and Instruction, or cTEKI, helps educators across Cleveland Clinic enhance the effectiveness of their teaching by leveraging the right technology.

cTEKI develops strategic web-based training to supplement the medical and academic education of physicians, residents/fellows, medical students, and allied health and nursing personnel. Examples of such eLearning solutions include:

- Blended learning
- Interactive case studies
- Multimedia including video, illustration, and interactive graphics
- Advanced quizzing
- Gamification

The cTEKI team offers:

- Guidance about technology-based solutions
- Training so that caregivers can develop their own courses
- Course design & development for creating and maintaining courses

The overall goals of cTEKI are to help improve efficiency and effectiveness of eLearning, and to provide expertise in the development of web-based education and training materials.

View our showcase page:







## Library Services

### Supporting Knowledge Acquisition

Library Services oversees the Floyd D. Loop Alumni Library on the Cleveland Clinic main campus, physical libraries at Fairview, Hillcrest and South Pointe hospitals, and the virtual libraries for Cleveland Clinic's remaining regional hospitals, family health centers, and hospital in Abu Dhabi. The department also provides backup support for the library at Cleveland Clinic Florida.

With the goal of providing information relevant to patient care, research and education, Library Services ensures access to numerous online resources for all Cleveland Clinic caregivers. Our professional librarians hold workshops to help users conduct online research, and they teach information management skills to help users keep pace with the rapidly evolving medical literature. The Loop Alumni Library offers computers for research and quiet rooms for study.

Cleveland Clinic healthcare professionals depend on our library resources to enhance their medical knowledge, contribute to research and improve patient care.



During the 2014-15 academic year, 199 educational sessions were offered, and 829 caregivers participated in educator development.

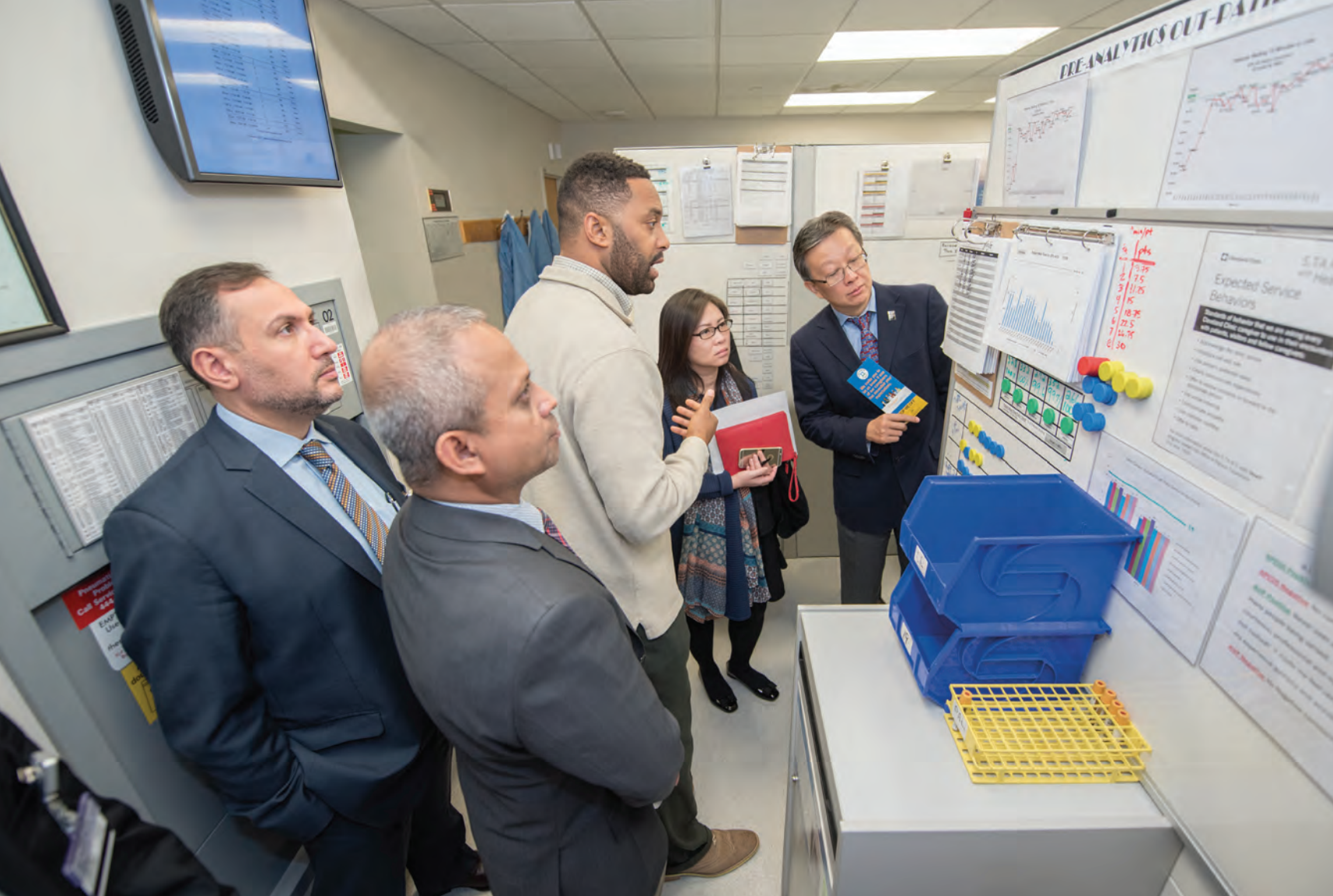
## Educational Resources

### Supporting Those Who Teach

Cleveland Clinic is an academic medical center, and our professionals are involved in the education of health professions trainees at multiple levels, from student to fellow. They need to know how to develop a curriculum, how to assess learners and how to evaluate educational programs. Faculty within the Center for Educational Resources support the Cleveland Clinic Lerner College of Medicine as Directors of Evaluation, Educator Development and Assessment. They also serve as a resource for professionals within the greater Cleveland Clinic community who are involved in the education of trainees.

The center's Office of Educator Development offers educational sessions on a variety of topics, including interactive teaching, curriculum development, assessment for learning, giving useful feedback and program evaluation. In addition to various certificate programs (Distinguished Educator Level I and II), the Office of Educator Development offers an Education Institute-sponsored one-year Medical Education Fellowship, which allows educators to enhance their skills in medical education or medical education research. In collaboration with Cleveland State University, the center also offers health professions educators the opportunity to complete a two-year Master of Education in Health Professions Education degree.





## Strategic Educational Collaborations

In collaboration with Case Western Reserve University's Weatherhead School of Management, we offer an executive MBA (EMBA) degree — Cleveland Clinic-Weatherhead School of Management Executive MBA — designed to give high-potential healthcare professionals the opportunity to advance their leadership and management skills.

[www.weatherhead.case.edu/clinicemba](http://www.weatherhead.case.edu/clinicemba)

To give health professions educators the opportunity to further refine their teaching skills and strengths, we offer a Master of Education degree in Health Professions Education in collaboration with Cleveland State University.

[www.clevelandclinic.org/mehpe](http://www.clevelandclinic.org/mehpe)

Also in the leadership development portfolio, Leading in Health Care is a 10-month course offered to a nominated cohort of Cleveland Clinic physicians, nurses and administrators, and collaboratively administered by the Cleveland Clinic Global Leadership and Learning Institute

and the Education Institute. Designed to give these emerging leaders the competencies to lead at Cleveland Clinic and globally, the course addresses: (1) Cleveland Clinic culture and history; (2) healthcare finance; and (3) leadership competencies.

The Education Institute also collaborates closely with our Global Leadership and Learning Institute to provide leadership development to healthcare executives from around the world. As an example, the Samson Global Leadership Academy for Healthcare Executives offers a two-week immersion into self-development and systems thinking, and has attracted healthcare leaders from 24 countries to date.

[www.clevelandclinic.org/ExecEd](http://www.clevelandclinic.org/ExecEd)





## Cleveland Clinic Florida Center for Education

Cleveland Clinic Florida offers myriad educational activities for internal and external audiences, including continuing medical education, graduate medical education and education programs for international observers, medical students and patients. Cleveland Clinic Florida also houses a full-service library.

The strong alliance Cleveland Clinic Florida enjoys with the Cleveland Clinic Education Institute enhances the educational capabilities in both Florida and Cleveland.

Cleveland Clinic Florida is currently the largest institutional sponsor of GME programs in Broward County, offering 10 ACGME-accredited programs, 12 programs outside ACGME oversight and one pharmacy residency program, together which serve more than 100 trainees.

In most of our training programs, our residents and fellows exceed their peers with certifying examination passage rates that are among the highest in the nation. The majority of Cleveland Clinic Florida's programs have five-year board pass rates of 100 percent.

Our Continuing Education Department is robust. A total of 325 Regularly Scheduled Series sessions took place in 2015, which included multiple specialties. In addition to the Regularly Scheduled Series, five live symposia were attended by physicians from around the world. In 2016, Cleveland Clinic Florida has increased the number of Regularly Scheduled Series by 40 percent and live activities by 80 percent, with an additional increase expected in 2017. The department also continues to collaborate on multiple live activities with the CME team in Cleveland.



**Cleveland Clinic Lerner College of Medicine**  
**James Young, MD**  
Executive Dean  
youngj@ccf.org

**Diane DeCamillo, RN, MSN**  
Administrator  
decamid@ccf.org

**Graduate Medical Education**  
**Elias Traboulsi, MD, MEd**  
Director  
traboue@ccf.org

**Steven Campbell, MD, PhD**  
Associate Director  
cambes3@ccf.org

**John Tetzlaff, MD**  
Associate Director  
tetzlaj@ccf.org

**Lori Smith, MBA**  
Administrative Director  
smithl11@ccf.org

**Simulation and Advanced Skills Center**  
**Eric Jelovsek, MD, MMed**  
Director  
jelovsj@ccf.org

**Philip Schauer, MD**  
Associate Director  
schaup@ccf.org

**Matthew Kroh, MD**  
Associate Director  
krohm@ccf.org

**Leslie Simko, MS, RN, CHSE**  
Administrator  
simkol@ccf.org

**Scientific Publications**  
*Cleveland Clinic Journal of Medicine*  
**Brian Mandell, MD, PhD**  
Editor-in-Chief  
mandelb@ccf.org

**Pelin Batur, MD**  
Deputy Editor  
baturp@ccf.org

**James Pile, MD**  
Deputy Editor  
pilej@ccf.org

**Peter Studer**  
Executive Publisher  
studerp@ccf.org

**Continuing Education**  
**Alexander Rae-Grant, MD**  
Director  
rae-gra@ccf.org

**Anthony Fernandez, MD, PhD**  
Associate Medical Director  
fernana6@ccf.org

**Courtenay K. Moore, MD**  
Associate Medical Director  
moorec6@ccf.org

**Donna Jackman**  
Associate Director  
jackmad@ccf.org

**International Medical Education**  
**Khaldoun G. Tarakji, MD, MPH**  
Director  
tarakjk@ccf.org

**Maria Hunt, MBA**  
Manager  
huntm@ccf.org

**Health Sciences Education**  
**Marguerite Group, MD**  
Director  
groupm@ccf.org

**Roy Anderson, MS**  
Director, Educational Partnerships  
andersr@ccf.org

**Technology-Enhanced Knowledge  
and Instruction**  
**Neil Mehta, MBBS, MS**  
Director  
mehtan@ccf.org

**Nichole Santori**  
Department Lead  
santorn@ccf.org  
**Library Services**  
**Michelle Kraft, MLIS**  
Director  
kraftm@ccf.org

**Educational Resources**  
**Alan L. Hull, MD, PhD**  
Director  
hulla1@ccf.org

**Cleveland Clinic Florida Center for Education**  
**Eric Weiss, MD**  
Chairman  
weisse@ccf.org

**Jeneva Hakman, MBA**  
Administrative Director  
hakmaj@ccf.org

**Administration**  
**James K. Stoller, MD, MS**  
Chairman  
Jean Wall Bennett Professor of Medicine  
Samson Global Leadership Endowed Chair  
216.444.1960  
stollej@ccf.org

**Phil Gard, MOD**  
Administrator  
216.444.5678  
gardp@ccf.org

**Steven Kawczak, MA, PhD**  
Director, Professional Development  
216.444.2572  
kawczas@ccf.org

**Jon Bonezzi, MBA, MS**  
Assistant Administrator  
216.444.2059  
bonezzj@ccf.org

**Laura Greenwald, MBA**  
Communications Manager  
216.445.8372  
greenwl@ccf.org

**Sarah Janesz, MAFM**  
Finance Director  
216.445-6026  
janeszs@ccf.org

**Amy Kubacki**  
Senior Development Director  
216.636.5024  
kubacka@ccf.org



## PHILANTHROPIC GIVING

The Education Institute welcomes donations to advance its mission of educating those who serve.

Individuals, families and foundations that believe in the value of education are making a difference in the future of patient care with their generosity. To learn how you can help, please contact Amy Kubacki at

**216.636.5024** or at **[kubacka@ccf.org](mailto:kubacka@ccf.org)**.



The Education Institute oversees many of the training and education programs Cleveland Clinic offers to a global audience of physicians, medical students, residents and fellows, health science students, allied health professionals, and our patients and their families. Each year, 400,000 healthcare professionals from around the world engage in the various educational activities sponsored by the Education Institute.