

» Global CARE

CLEVELAND CLINIC'S AIR MEDICAL EVACUATION MEMBERSHIP



» Cleveland Clinic Global CARE
is ideal for travelers and
their families.



Frequently Asked Questions

My premium credit card covers air ambulance services, so why would I pay for the Global CARE Program?

Your card probably gets you to the “nearest appropriate facility,” and it may even pay for a family member to accompany you, but you have no control over your medical care or destination. With Global CARE, you decide where to be transported. Plus, no other transport service can provide the level of medical expertise that our Cleveland Clinic teams do before, during and after the transport.

Are there any hidden costs or fees?

The only cost is the annual fee. With the Global CARE Program, there are no out-of-pocket expenses for your transport and no claim forms to fill out. Also, unlike travel insurance, our annual plan covers every trip you take, all year long. And you can use our transport services in the event of a medical emergency up to twice per year.

How critical must my condition be to receive transport services to Cleveland Clinic?

While many travel insurance plans restrict transport for extreme cases, Global CARE does not. If you are hospitalized more than 150 miles from home and cannot travel by commercial means, you can use your Global CARE membership.

Wouldn't my health insurance cover the transport?

Traditional health insurance doesn't always cover medical transport, and out-of-pocket costs can easily exceed \$10,000. Global CARE's membership fee includes your entire medical transport — hospital bed to hospital bed — with no deductibles, co-pays or claims to file. It's an exceptional value for the peace of mind Global CARE provides.

Does this include all travel? Even international?

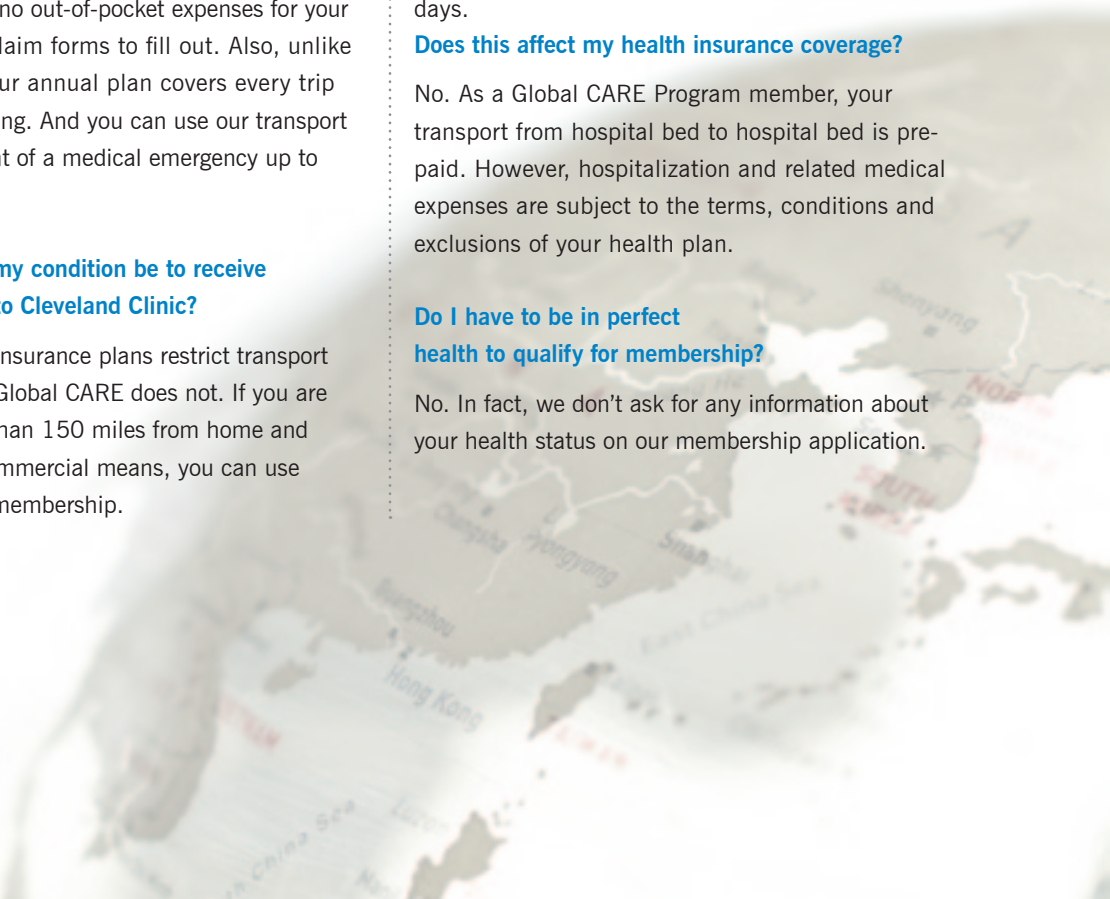
Yes, it covers all travel more than 150 miles from your home. International travel is covered so long as the trip is less than 120 consecutive days.

Does this affect my health insurance coverage?

No. As a Global CARE Program member, your transport from hospital bed to hospital bed is pre-paid. However, hospitalization and related medical expenses are subject to the terms, conditions and exclusions of your health plan.

Do I have to be in perfect health to qualify for membership?

No. In fact, we don't ask for any information about your health status on our membership application.



» Consider Global CARE if you:

- Vacation more than 150 miles from home
- Travel for business
- Have children attending school away from home



Medical emergencies can happen anywhere. Often when you least expect it. That’s why Cleveland Clinic created Global CARE (Critical Care Air Rescue and Evacuation) – to give travelers peace of mind, knowing that access to top medical care is just a phone call away.

If a member is hospitalized more than 150 miles from home and cannot travel by commercial means, our medical staff and flight crews will transport the patient to Cleveland Clinic or the facility of the patient’s choice – a benefit that most travel insurances do not provide.

Cleveland Clinic care begins when our team arrives.

With Global CARE, you are provided with Cleveland Clinic care upon our team’s arrival. Unlike other medical transport teams, ours are led by physicians and/or acute care nurse practitioners who are on board every flight.

The Cleveland Clinic team is on call 24 hours a day, seven days a week.

One phone call brings the expertise of Cleveland Clinic to you – day or night. Every year, Cleveland Clinic completes approximately 4,500 medical transports from across the country and across the globe.

Membership qualifications

Global CARE memberships are available to:

- United States and Canadian residents
- Individuals up to the age of 85 at time of enrollment

Annual plans

Annual plans provide every member with the assurance and comfort that world-class Cleveland Clinic care is available from anywhere in the world.

Individual Plan	Family Plan*
\$400	\$600

* Family coverage includes a spouse/partner and up to five dependent children under age 19 (or through age 26 if unmarried and a full-time student in an accredited program).

For complete terms and conditions, visit clevelandclinic.org/globalcare.

To enroll today or for membership information, visit clevelandclinic.org/globalcare
email ccglobalcare@ccf.org
call **866.442.5092**



Every life deserves world class care.

9500 Euclid Avenue, Cleveland, OH 44195

Cleveland Clinic is an integrated healthcare delivery system with a main campus, 18 family health centers, eight community hospitals and locations in Ohio, Florida, Nevada, Toronto and Abu Dhabi. It is a not-for-profit group practice where nearly 3,000 staff physicians and scientists in 120 medical specialties collaborate to give every patient the best outcome and experience. Cleveland Clinic is ranked among America's top hospitals overall, and among the nation's leaders in every major medical specialty (*U.S. News & World Report*).
clevelandclinic.org

© The Cleveland Clinic Foundation 2012